

# Reviewing and updating the comments of the Melon Plant Care Expert System

## Table of Contents

<b>1. INTRODUCTION .....</b>	<b>2</b>
<b>2. USER INTERFACE .....</b>	<b>3</b>
<b>3. SCREEN (DISPLAY ALL OPERATIONS) .....</b>	<b>4</b>
<b>4. SCREEN (DISPLAY DAILY OPERATIONS).....</b>	<b>6</b>
<b>5. TEST CASES .....</b>	<b>7</b>

## **1. Introduction**

**T**his verification report based on the implementation code and the following technical reports:

1. Revised Plant Care Design of Melon (TR/CLAES/240/2002.4).
2. Plant Care Implementation For Melon (TR/CLAES/257/2002.12).
3. Verification of the Melon Plant Care (TR/CLAES/259/2003.1).

The activities used to produce this report are as follows:

1. Walking through the User Interface .
2. Walking through Test Cases and create random cases.
3. Summarize the result of testing usability of the system.
4. Conclusion.

## 2. User Interface

### In the Main Display:

- The title of all forms must be meaningful and must be in arabic.  
**solved**

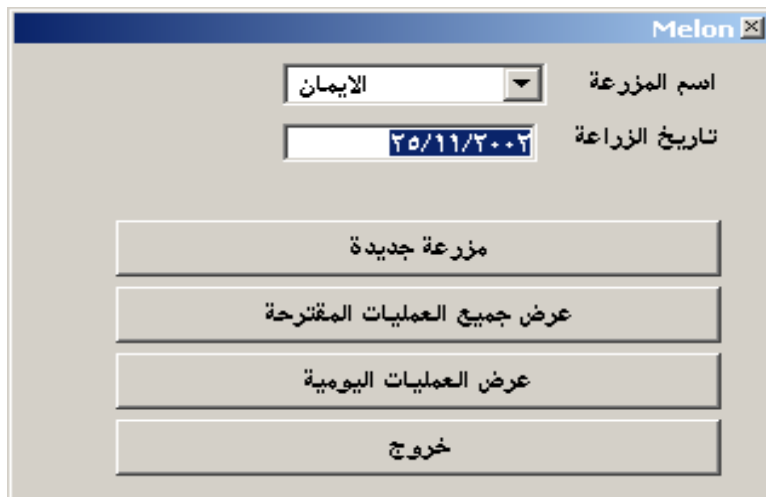
- The border style of this form must be not (Fixed ToolWindow) because in this style the form can not be minimized and has no icon to inform user in the TaskBar.  
**solved**

- The plantation Date must be calender to be easy in use.  
**solved**

- The plantation Date has no validation to be in certain Period, and the system must check the plantation date with the current date (It is necessary to give results).  
**solved**

- After entering new farm and save it, this farm must be displayed in the main display of (Farm name and Plantation date).  
**solved**

- I suggest that the main display of the plant care in fig 1 changed as in the fig. 2.



The screenshot shows a window titled "Melon" with a light gray background. At the top, there is a blue title bar with the text "Melon" and a close button icon. Below the title bar, there are two input fields. The first field is labeled "اسم المزرعة" (Farm Name) and contains the text "الايمان". The second field is labeled "تاريخ الزراعة" (Planting Date) and contains the date "٢٥/١١/٢٠٠٢". Below these fields, there are four buttons stacked vertically. The buttons are labeled: "مزرعة جديدة" (New Farm), "عرض جميع العمليات المقترحة" (Show all suggested operations), "عرض العمليات اليومية" (Show daily operations), and "خروج" (Exit).

Fig 1

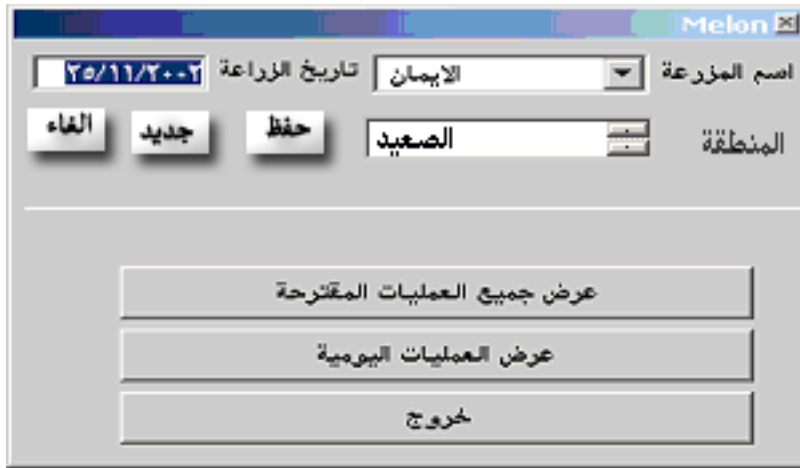


Fig 2

Note in this new display,

1. The farm data in the main display and the display of new farm will be deleted.
2. The style of the combo box must be (dbcDropDownCombo) to permit the user to enter farm name and select farm name.
3. If the user want to enter new farm he must press button (  ), then enter the name of the farm and enter the plantation date by calender then select the region from the list and press button (  )
4. If the user want to update found farm, he must select the farm name from combo or select and change it, then change the plantation date or change the region the press the button (  ) to update the data (if the data is found then update else if the data is not sound then insert) .
5. The region list must be widen to permit the user to select item.
6. The button (  ) to delete the selected record.
7. The selected farm must be consederd and the last saved farm must be considered.
8. the two buttons (  ) and (  ) must be disabled unilil the user select record to be cosidered.

**We considered the remarks related to functionality of the screens but we saw that there is no need for the new form.**

### 3. Screen (Display all operations)

- The title of the form must be meaningful and must be in arabic.  
**solved**
- The border style of this form must be not (Fixed ToolWindow) because in this style the form can not be minimized and has no icon to inform user in the TaskBar.  
**solved**

- The lists must be enough wide to display the all data as shown in fig 3.



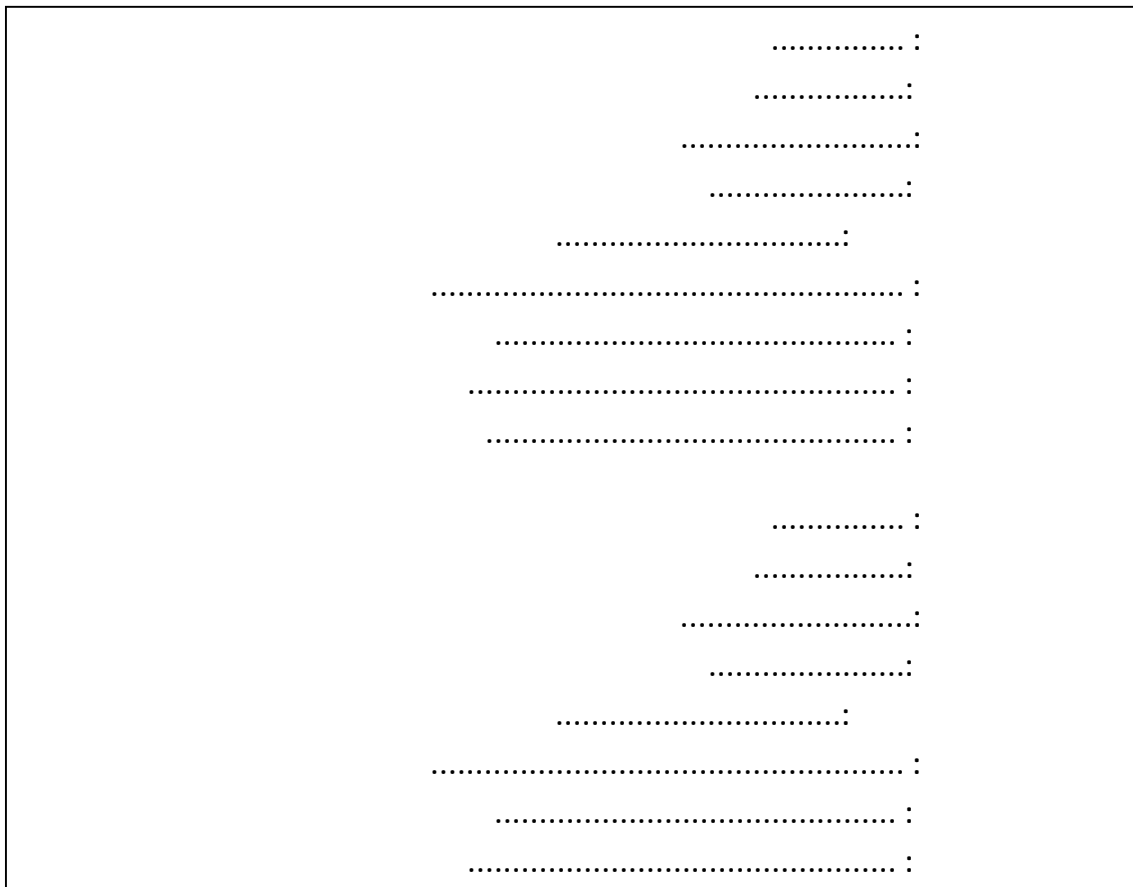
Fig. 3

**solved**

- The text box of ( ) has no data for any selected operation.
- The list of the operations must be labeled.

**solved**

- I suggest that the display should have button ( ) to save the result data of all operation in a file as this format:



#### 4. Screen (Display daily operations)

- In the display of the details of the operation, the date of performing the operation must be necessary. So if the user want to exit without enter the date, the system must give the user message box to inform him. The date must be done by calendar.

**solved**

- The display must have exit button, and the system must oblige the user to press the button ( ) or ( ) before exit the display.

**solved**

- If I press the (X) button, without entering the date of performing the operation and without press the button ( ), or ( ) the system gives this message:



**solved**

- If the user enter the date of performing the operation not logic (such as entering date before the suggested date of that operation or before the last operation), the system must inform the user so this date must have validation. The system must give constraints in this date.

**solved**

- The button ( ) must be ( ) and ( ) must be ( ).

**solved**

- The text boxes must have width and height enough to display entire the data as this display (Operation Name):

**solved**

- The numbers must be adjusted with the string as in this display.

زراعة البذور

أسم العملية زراعة البذور

التاريخ المقترح لتنفيذ العملية 16/1/2002

المادة

الأداة عمال

معدل الاداء فدان/6 ساعة/2 عامل

الاهمية اجبارية

الكمية فدان/جرام 150-200

وقت اجراء العملية أثناء اليوم صباحا أو مساء

الطريقة

ينتم الزراعة في تربة رطبة بزراعة بذرة واحدة في منتصف فتحة الملبس على بعد 3 سم من النقاط على مسافة 50 سم بين البذرة و الأخرى اي بمعدل بذرة واحدة عند كل نقاط و توضع البذرة على عمق 1-2 سم و التغطية ثم الري مباشرة لسد الفجوات. و في حالة وجود حفار أو دودة قارضة بالمنطقة يوضع طعم سم بعد الزراعة مباشرة. يلاحظ أنه لا بد من زراعة بذور في صواني الغيوم في نفس يوم الزراعة و ذلك لاستخدامها في عملية الترفيح حتى لا يكون هناك تفاوت في النمو بين البذور المزروعة و نباتات الترفيح

الغاء تمت تاريخ تنفيذ العملية

This because the tool allow us only to enter the string as shown

## 5. Test cases

all the test cases that were not showing any result has been modified and it is showing a result now