

TR/radcon/2007.2/Elsayed/1

Prepared by

Abd-Elrahman Elsayed

Table of Contents

Table of Contents.....	1
1 Introduction.....	2
1.1 Benefits	2
1.2 Techniques	2
1.3 Components.....	2
2 Front-End Screens	3
2.1 Small enterprise.....	4
2.1.1 Advanced Search for small enterprise	6
2.1.2 Lending Institutions	7
2.2 Related Links.....	8
2.3 Electronic Exhibition	9
3 Back-end.....	11
3.1 Small enterprise.....	12
3.2 Lending institutions	13
3.3 Youth exhibition products.....	15

1 Introduction

1.1 Benefits

- Misunderstandings between software users and developers are exposed.
- Missing services may be detected and confusing services may be identified
- A working system is available early in the process.

1.2 Techniques

Various techniques are used for rapid development:

- High-level language development: ASP.Net with C#.
- Database programming: SQL Server2000.
- GUI tools: Photoshop.

1.3 Components

- **The front-end component** provides the information retrieving/browsing/accessing functionalities, and is available for any site user.
- **The backend component** provides the data management functionalities that enable each stakeholder to enter/update/delete/publish data items.

Next sections provide samples of the prototype screens for both backend and front-end components.

2 Front-End Screens

Font-end of the youth module consists of three sub-modules that are Small enterprise, Electronic exhibition and related links for preparation of feasibility studies and Legal proceedings. Figure 1 shows the front end of **Youth Module**

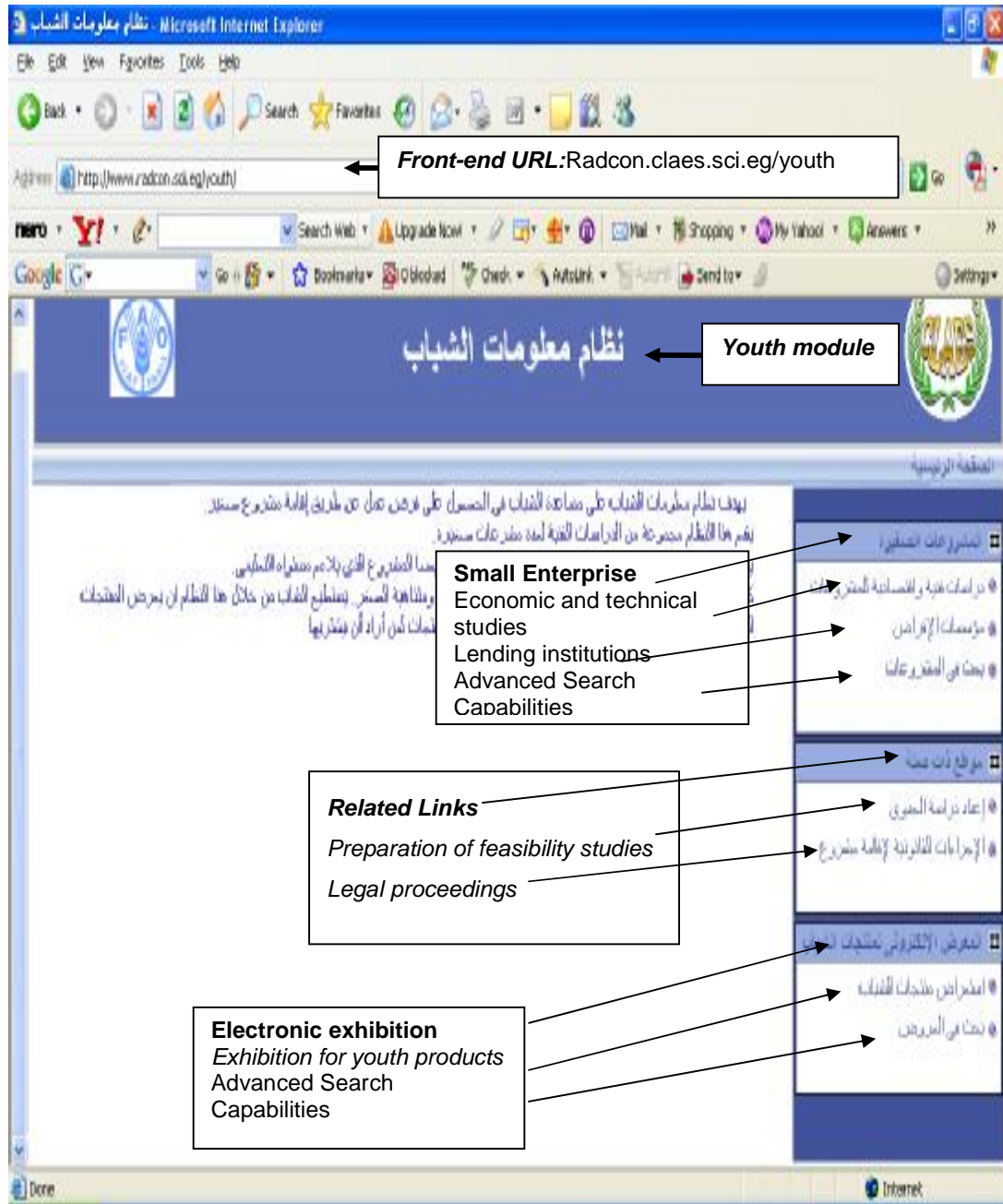


Figure 1 Front-end Home page Screen

2.1 Small enterprise

It consists of three sub-links that are Economic and technical studies, Lending institutions, and advanced search links. After clicking on the Economic and technical studies link, the names of all available enterprise will be appeared (as shown in figure2).



Figure (2) Economic and technical studies Screen

To display the details of the small enterprise click on its name then the small enterprise details will be displayed as shown in figure (3)



Figure (3) Small enterprise details

2.1.1 Advanced Search for small enterprise

This link provides the advanced search capability, see figure (4). You can search for small enterprise by different criteria, such as (search by Enterprise Name, Activity, Geographical Environment, Technology Type, Education Level, Cost, and Enterprise Materials).

- **Input:** Select or enter specific searching keywords.
- **Output:** Display one or more page that reflects the search target.



Figure (4) Advanced Search Page

2.1.2 Lending Institutions

By clicking lending institutions link, different names of lending institutions will be appeared (as shown in figure 5).



Figure (5) Lending institutions screen

And for more details about lend institutions, click on its name then the details of it will be displayed as shown in figure (6)



Figure (6) lending Institutions details information

2.2 Related Links

This module provides different useful links that provide information about preparation of feasibility studies and legal proceedings (as shown in figure 7).



Figure (7) Related Links

2.3 Electronic Exhibition

This sub-module provides electronic exhibition for the youth products. Product information contains (Its categories, commercial name, price, and contact information of the seller). It contains two links: one of them is the Browsing link and the other for products search). After clicking on electronic exhibition link, different products name will appear as shown in figure (8).



Figure (8) Browsing Electronic Exhibition Page

To display more detail about the exhibited product click on its name then the details of it will be displayed as shown in figure (9)



Figure (9) Product Details Page

3 Back-end

In this section we describe the back-end pages: the current URL for accessing Youth module backend is <http://radcon.claes.sci.eg/Youth/backend/>

Figure (10) shows the login screen: This screen provides the system security, each stakeholder has a specific user name and password associated with a specific capabilities and functionality.

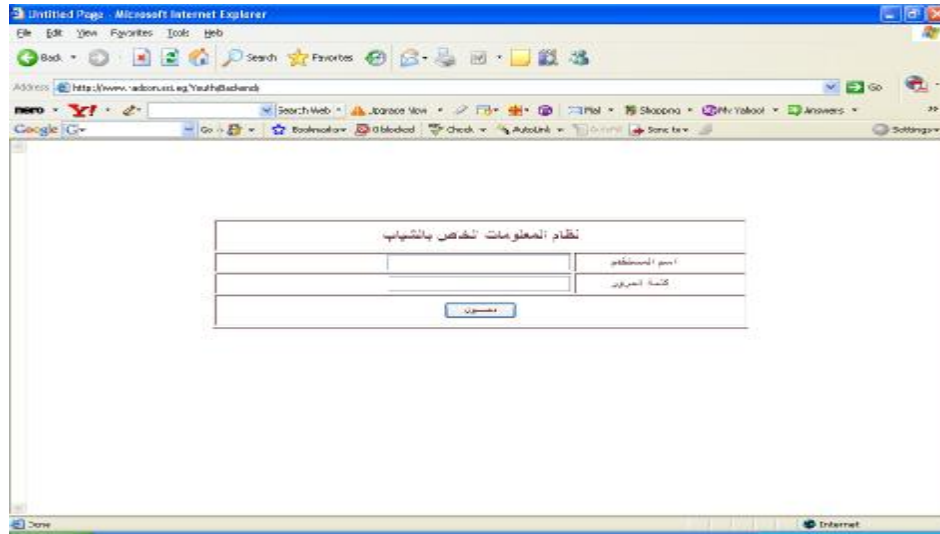


Figure (10) Login Screen

After logging to the system the main page for the backend will be displayed as shown in figure (11)

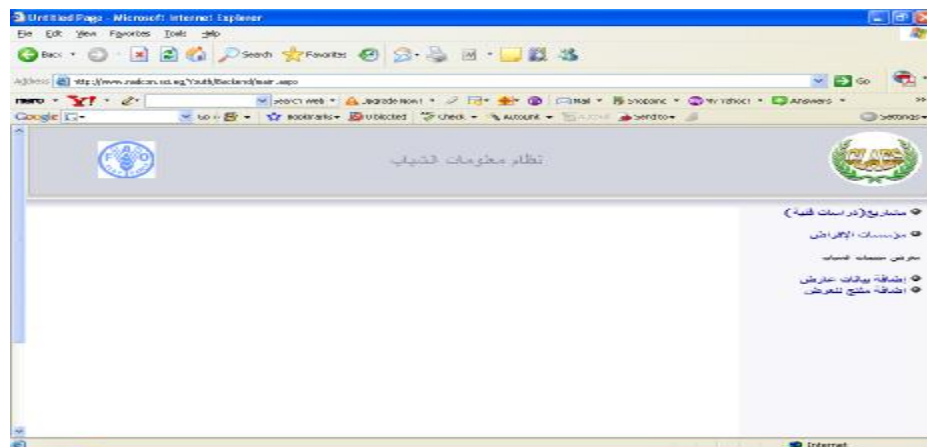


Figure (11) Main page for back-end

Backend main page has three items: **Small enterprise**, **Lending Institutions** and **Electronic exhibition items**. Each data entry user and administrator will have the capability to add, edit, and publish according to his privileges

Here we will outline some back end screens.

3.1 Small enterprise

To browse all existing enterprise that has been entered to the system, in the right menu click small enterprise link "مشاريع (دراسات فنية)". Figure (12) shows the backend screen for the small enterprise. Through this screen you can add new study for small enterprise including its metadata plus uploading its technical and economic study. Further you can edit existing enterprise or publish it.

Hint: we may use the extension document module of **VERCON** for uploading technical and economic study for each small enterprise

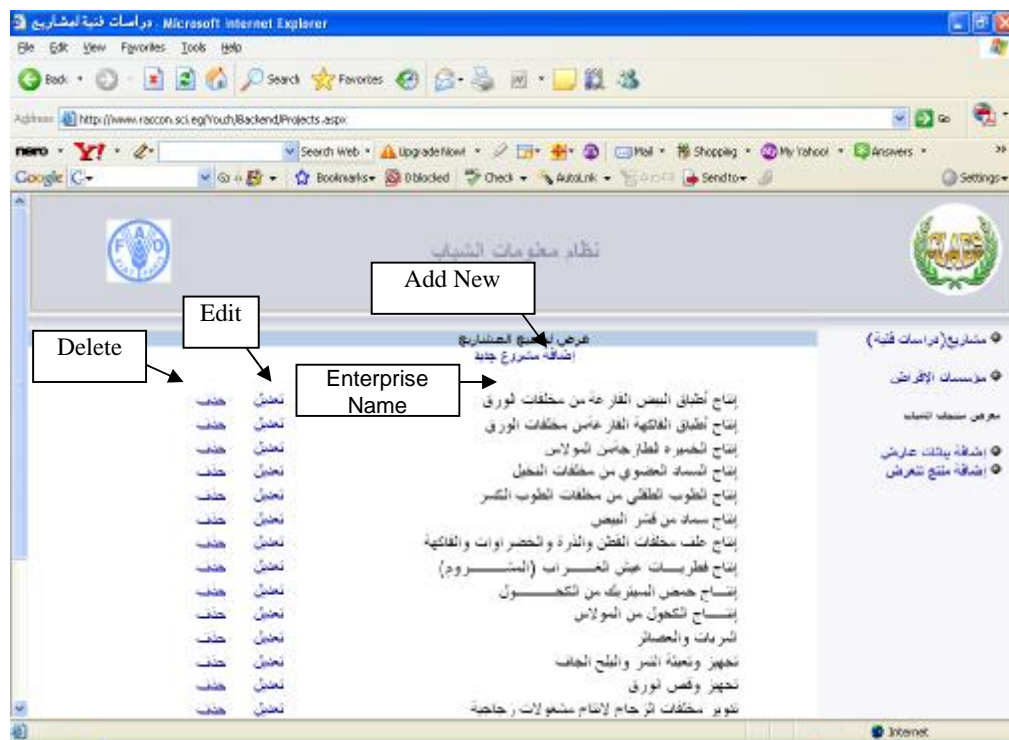


Figure (12) backend screen for small enterprise

Figure (13) displays data entry screen for new small enterprise.

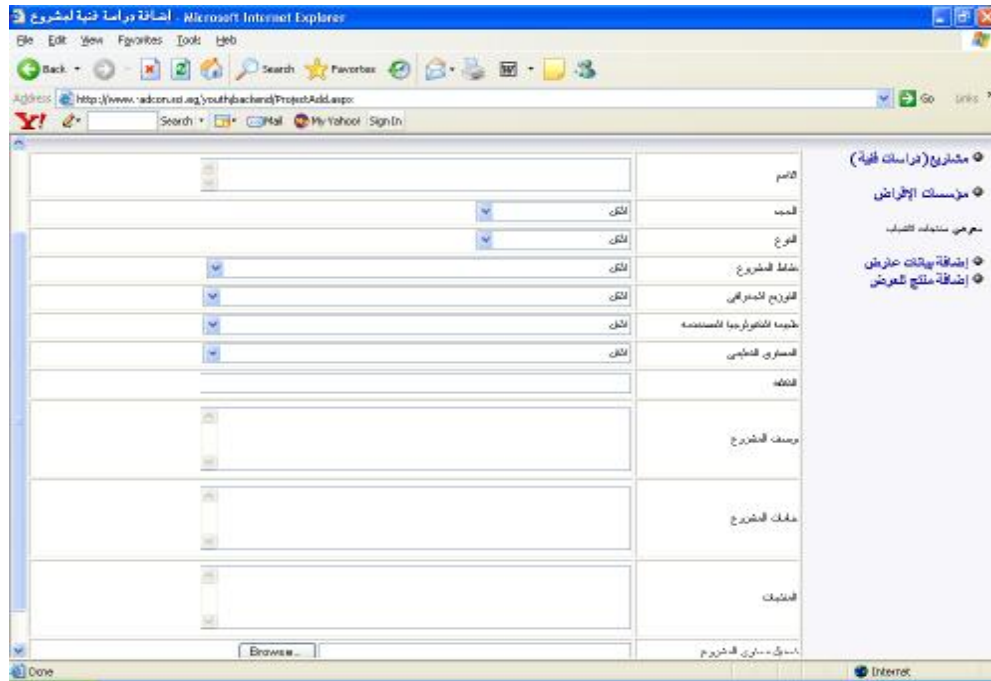


Figure (13) Data entry screen for small enterprise

3.2 Lending institutions

To browse all existing lending institutions that have been entered to the system, in the right menu click lending institutions link "مؤسسات الإقراض". Figure (14) shows the backend screen for the lending institutions. Through this screen you can add new lending institutions including its metadata. *Further you can edit lending institutions or publish it.*

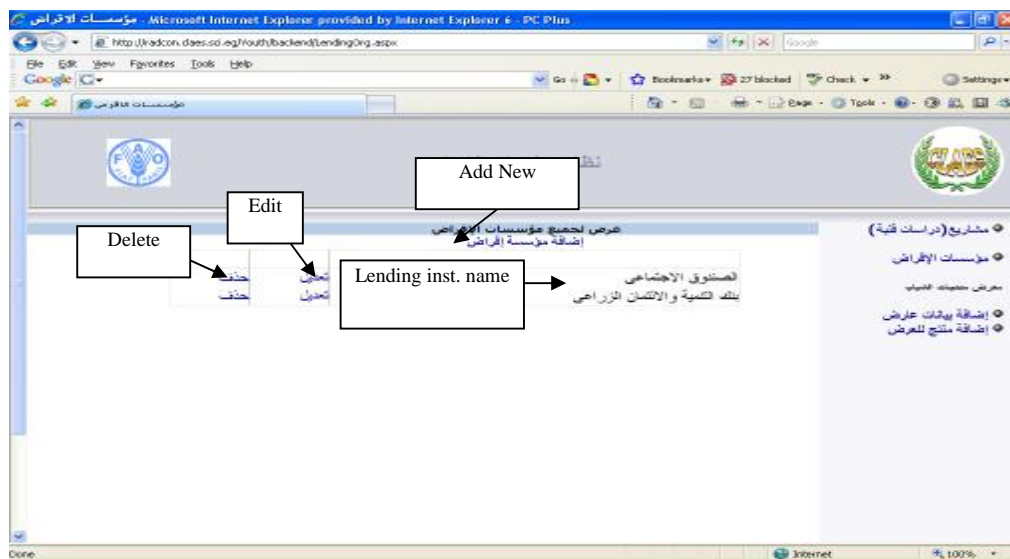


Figure (14) backend screen for lending institutions

The data entry screen for lending institution will contain (name, type, description, address, fax, and other.) See figure (15)

The screenshot shows a web browser window displaying a form for entering lending institution details. The form is titled 'نظام معلومات الشباب' (Youth Information System). The form fields include:

- المصرف الاجمالي (General Bank Name)
- شبكة الفيزية (Physical Network)
- نوع المنظمة (Organization Type)
- تاريخ المنظمة (Organization Date)
- البريد الإلكتروني (Email Address)
- موقع على الانترنت (Website)

The description field contains the following Arabic text:

من أهم الجهات المعنية بتفريخ في مجال المشاريع المعرفية و التوسعة هو الصندوق الاجتماعي للتنمية نظراً لأنه يقدم القروض للمشاريع الجديدة و يساهم في التنمية للمجتمع عن طريق تقديم قروض بتمويل فائدة أقل بكثير من العائد في البنوك المصرية -

The form also includes a table with the following data:

مخارج التمويل - مبلغ مالي	2000000	2000000
التقديرات	2630000	

The form also includes a 'حفظ' (Save) button.

Figure (15) Details of the lending in

3.3 Youth exhibition products

Youth exhibition products module is composed of two sub modules .The first module will contains information about exhibitors. The second module will contain information about the details of products.

To browse all existing exhibitors that have been entered to system, in the right menu click exhibitor link”إضافة بيانات عارضين”. Figure (16) shows the backend screen for the exhibitors. Through this screen you can add new exhibitor including its metadata. *Further you can edit or publish it.*

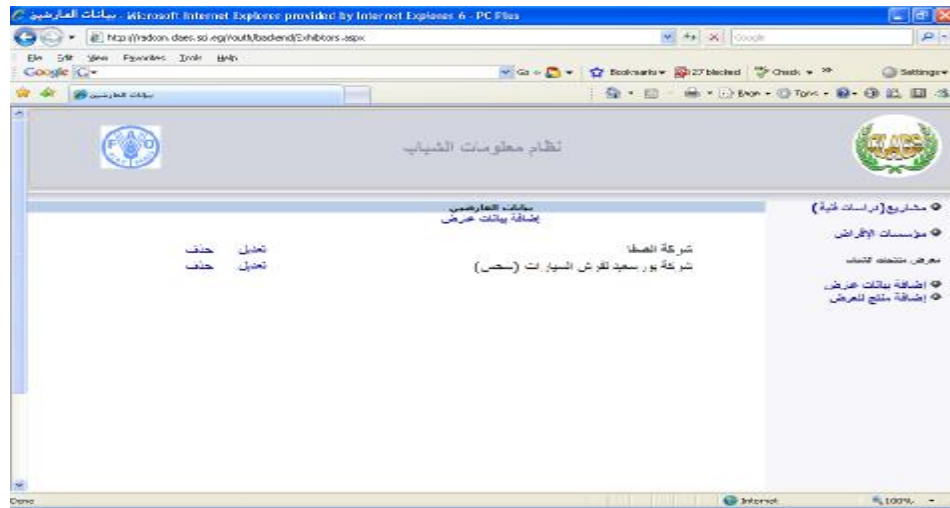


Figure (16) backend screen for exhibitors

To browse products that have been entered to system, in the right menu click products link”إضافة منتج للعرض”. Figure (17) shows the backend screen for the products.



Figure (17) Backend screen for the products