

Rural and Agricultural Development Communication Network Project
(RADCON)

User Manual
for
The Service of the Community Module
Technical Report
TR/RADCON/2006.11/Ismael.2

Submitted by

Osama Ismael

Submitted to

Food and Agriculture Organization of the United Nations
Egypt

Cairo, Egypt

November 2006

Table of Content

1.	Front-end	3
1.1	Association Subsystem	4
1.2	Donors Subsystem	5
1.3	Success Stories Subsystem	6
2.	Back-end	7
2.1	Data Entry User	8
2.1.1	Associations Subsystem	8
2.1.2	Success Stories	9
2.2	Administrator User	10
2.2.1	Associations Subsystem	10
2.2.2	Donors Subsystem	11
2.2.3	Success Stories Subsystem	12
2.2.4	Create a New User	12
2.2.5	Change User Password	13

User Manual for the Service of the Community Module

The Service of the Community Module can be classified into three subsystems: association, donors and success stories. Each subsystem has two major components: front-end functions (browsing and searching) and back-end functions (data entry and administrative functions). Each function is briefly described below, and screen shots of the user interface are presented.

1. Front-end

In this section we describe the front-end pages. A user can logs in without a user name or password. The home page provides point-and-click access to the major components described previously, as illustrated in the following figure.



Firstly, we can execute a quick search, that can search in the three subsystems (Association, Donors, Success stories). For example, if we search by the word "تنمية", we will get the following result:

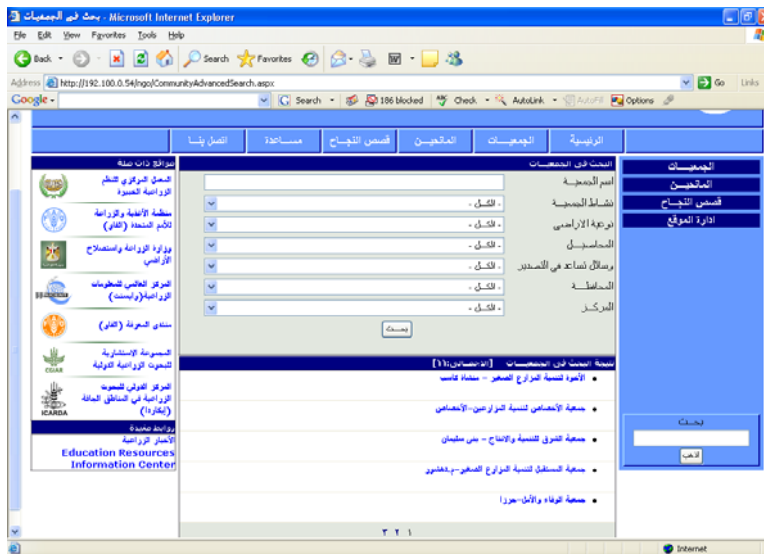


1.1 Association subsystem

If we select the Association button, system will give an advanced search, that work along different categories, such as association name, association activities, crop name and governorate.



If we select search without entering any criteria to search, system will retrieve all associations that available in the system, as illustrated in the following figure:



It is worth notice that, the search result will be divided into pages, where each page contain five associations.

If we select any association, system will display the association data, as illustrated in the following figure:



1.2 Donors Subsystem

If we select the donors' button, system will give an advanced search, that work along different categories, such as donors name and funded activities.



If we select search without entering any criteria to search, system will retrieve all donors that available in the system, as illustrated in the following figure:





It is worth notice that, the search result will be divided into pages, where each page contain five stories.

If we select any story, system will display the story data, as illustrated in the following figure:



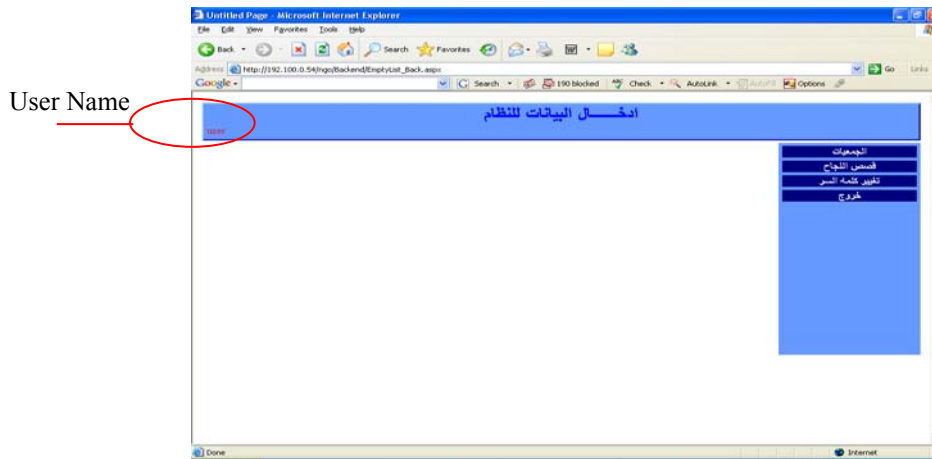
2. Back-end

In this section we describe the back-end pages. A user can logs in with a user name and password. From home page select “ادارة الموقع”, system will display the following page:



2.1 Data Entry User

System will direct the user to the suitable page based on the entered user name i.e. if the user name for data entry user, system will display the following page:

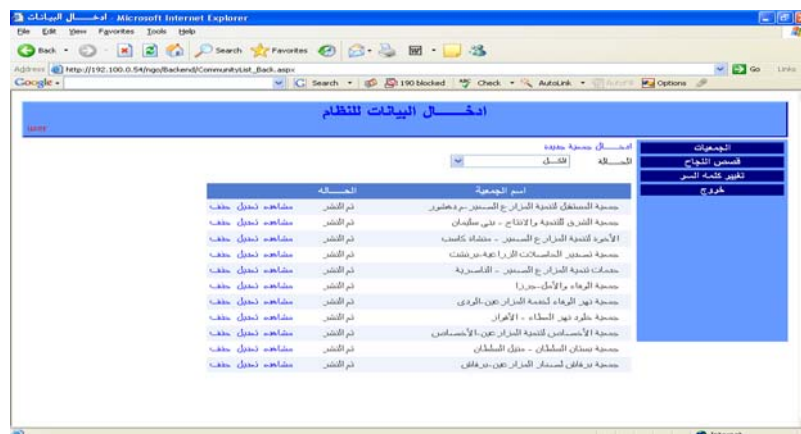


2.1.1 Associations Subsystem

If we select associations' subsystem, system will display all associations that available in the system and the status of each association (approved or unapproved), with the following abilities:

- Insert new association,
- Select an association to display its content,
- Update the association data,
- Delete association,
- Search based on the association status.

As illustrated in the following figure:



To insert a new association select “ادخال جمعية جديدة” as illustrated in the following figure:

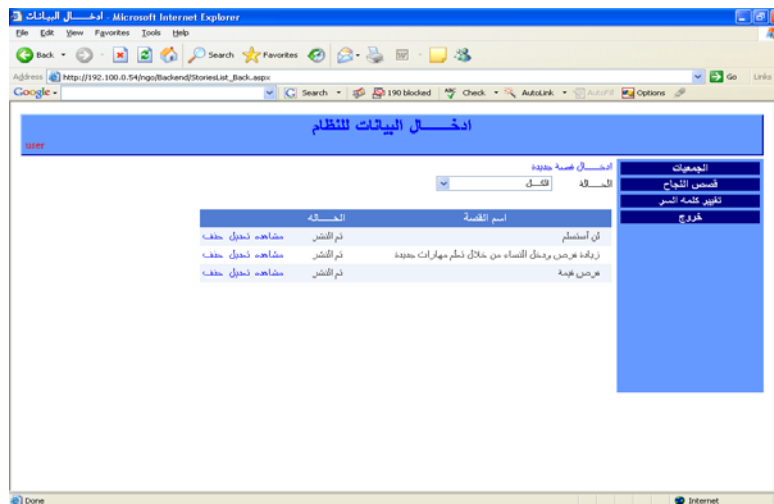


2.1.2 Success Stories

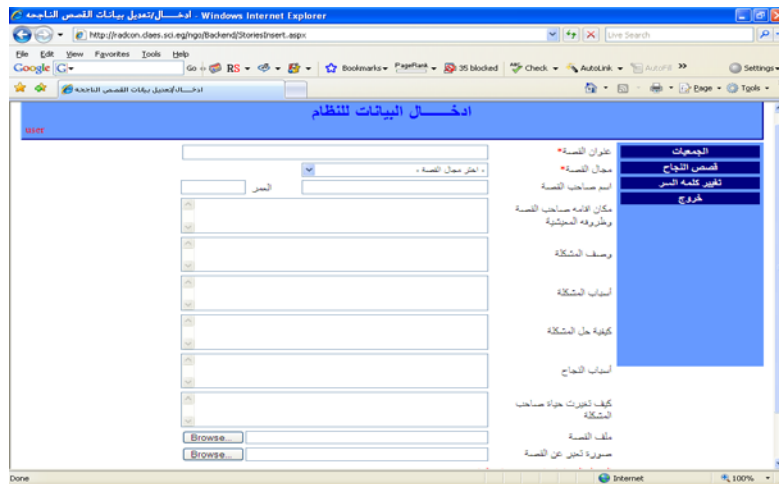
If we select success stories, system will display all stories that available in the system and the status of each story (approved or unapproved), with the following abilities:

- Insert new story,
- Select a story to display its content,
- Update the story data,
- Delete story,
- Search based on the story status.

As illustrated in the following figure:

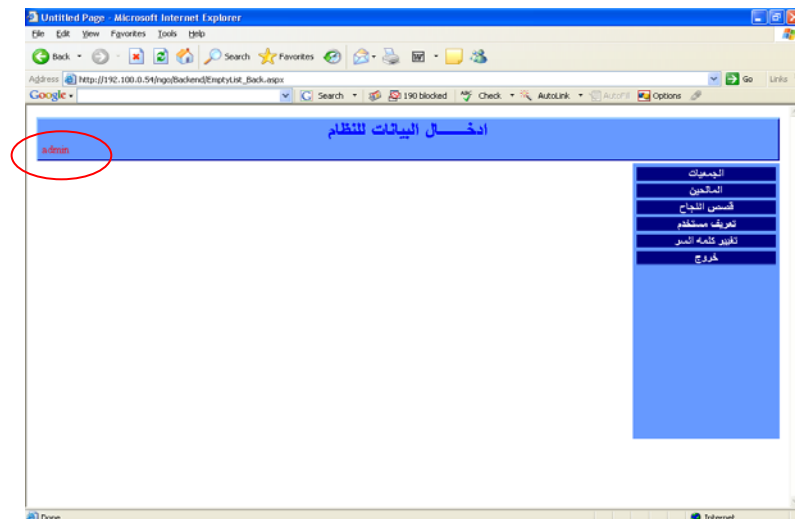


To insert a new story select “ادخال قصة جديدة” as illustrated in the following figure:



2.2 Administrator User

If the user name for administrator user, system will display the following page:



2.2.1 Associations Subsystem

If we select association, system will display all associations that available in the system and the status of each association (approved or unapproved) and the user name who insert this association, with the following abilities:

- Publishing association data, (review the association data, and then let it available to public)
- Select an association to display its content,
- Update the association data, (suggestions for improvement)
- Delete association,
- Search based on the association status.

As illustrated in the following figure:



2.2.2 Donors Subsystem

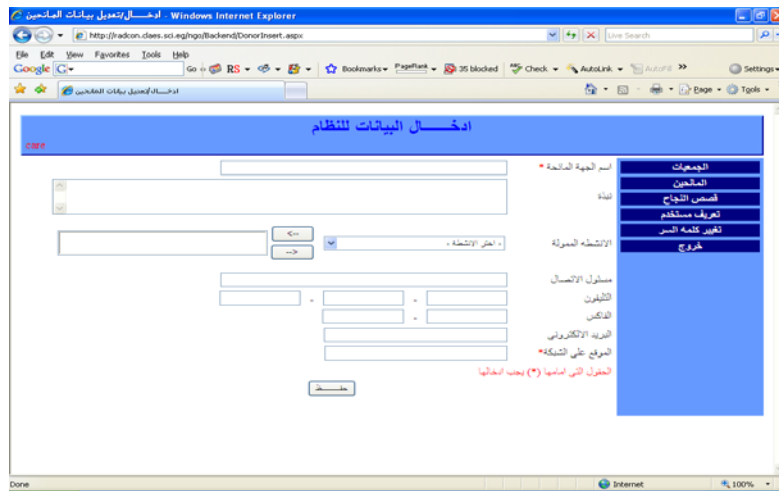
If we select donors, system will display all donors that available in the system, with the following abilities:

- Insert new donor,
- Select a donor to display its content,
- Update the donor data,
- Delete donor.

As illustrated in the following figure:



To insert a new donor select “ادخال مانح جديدة” as illustrated in the following figure:

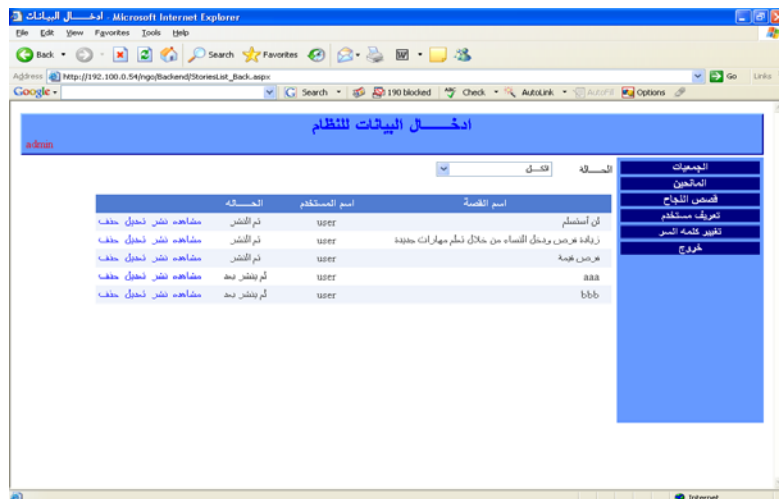


2.2.3 Success Stories Subsystem

If we select success stories, system will display all stories that available in the system and the status of each story (approved or unapproved), and the user name who insert this story, with the following abilities:

- Publishing story data, (review the story data, and then let it available to public)
- Select a story to display its content,
- Update the story data, (suggestions for improvement)
- Delete story,
- Search based on the story status.

As illustrated in the following figure:



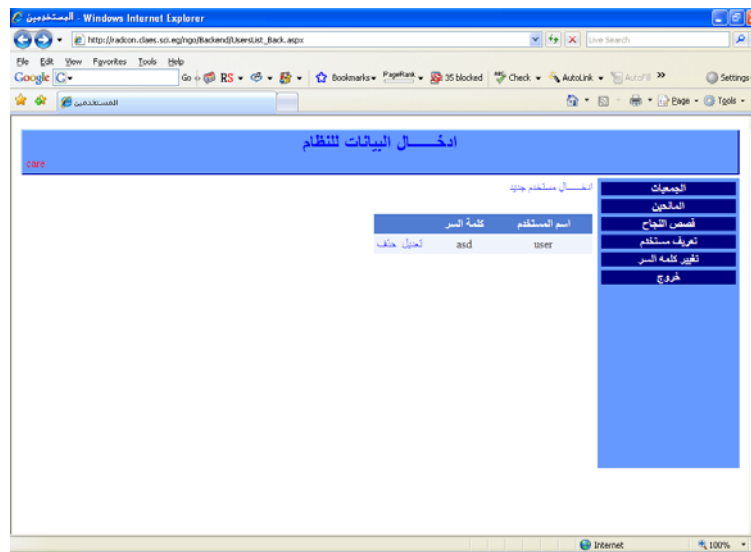
2.2.4 Create a New User

If we select create new user, system will display all users under this administrator and there password, with the following abilities:

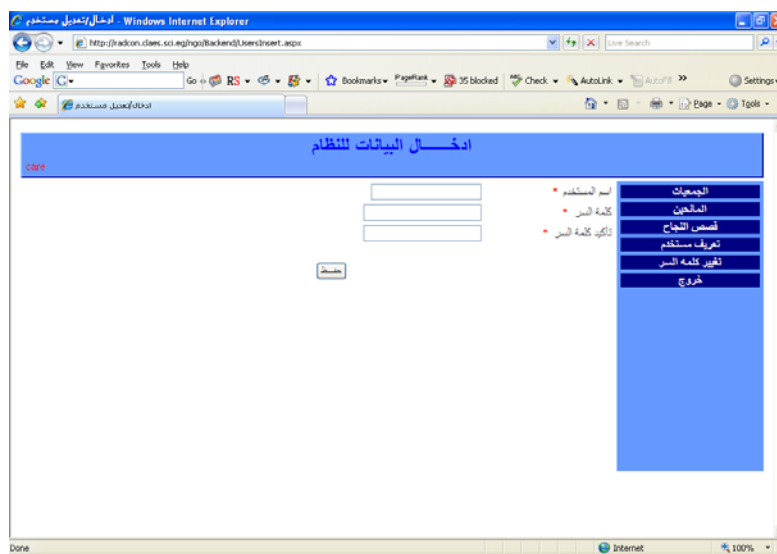
- Update the user password,
- Delete user,

- Create new user.

As illustrated in the following figure:



To create a new user select “ادخال مستخدم جديدة” as illustrated in the following figure:



2.2.5 Change User Password

If we select change password, system will display the administrator name and let hem to change their password, as illustrated in the following figure:

